



DUPONT™

Kevlar®

**Innovative
protection for
every challenge**

Kevlar® engineered yarns



Give your design the upper hand with Kevlar®

Engineered for your needs

We understand the importance of providing the protection, performance and comfort workers need. That's why our new DuPont™ Kevlar® engineered yarn portfolio has a range of yarns, enabling design flexibility for your gloves and sleeves to ensure the right protection for workers so they can get the job done safely—because there's no one-size-fits-all solution that meets the specific needs of every job, task and worker.

This is wearable technology



Only Kevlar® engineered yarns help enable manufacturers to deliver gloves and sleeves that meet the specific requirements for almost any job. From industry-leading multi-hazard protection to enhanced comfort and dexterity, our innovative portfolio of patented engineered yarns provides a range of solutions to overcome the industry's toughest challenges.

A complete portfolio of next-generation performance



Kevlar® Xtreme

Unmatched performance and multi-hazard protection designed for the most demanding conditions and high-risk hazards

Kevlar® Comfort

Engineered to provide workers with maximum comfort and dexterity without sacrificing cut and heat protection

Kevlar®

A proven combination of medium cut and heat protection with the durability to withstand the toughest conditions

Kevlar® Essential

Reliable cut and heat protection designed to deliver value for light- to medium-duty hand protection applications

Kevlar® Xtreme

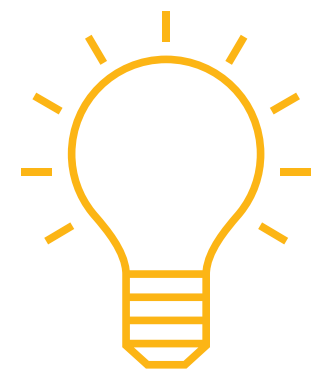
The most extreme conditions call for the most innovative protection and performance

Designed for workers facing the most high-risk hazards, Kevlar® Xtreme engineered yarns help deliver unmatched multi-hazard protection against cut, heat, flame and arc flash hazards without compromising comfort and dexterity.



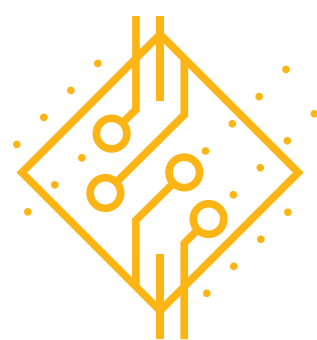
Ultimate performance

Extreme multi-hazard protection and comfort with industry-leading dexterity



Innovation

Engineered for the most demanding conditions



Technology

Patented DuPont yarn technology provides a differentiated solution



Comfort

Superior soft touch and improved sweat management



Primary industries

Kevlar® Xtreme delivers the superior multi-hazard protection that workers in the most demanding industries depend on.

Automotive

Maintenance

Construction

Metal fabrication

General manufacturing

Oil & gas

Machinery & equipment

Utilities



Kevlar® Comfort

Uncompromising protection with the comfort to match

Kevlar® Comfort engineered yarns are designed to help provide the best comfort, soft touch and dexterity while completing the most challenging tasks without sacrificing the cut and heat protection workers deserve.



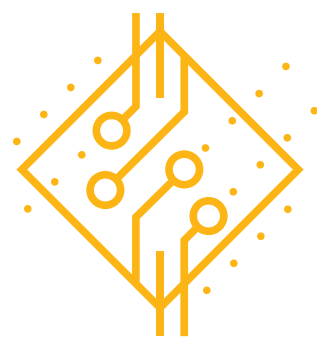
Comfort

Unique technology with maximum comfort and unparalleled soft touch



Balanced performance

Carefully engineered to balance lightweight protection with industry-leading dexterity



Technology

Patented DuPont technology provides a differentiated solution



Safety

Dual-hazard cut and heat resistance with improved moisture management



Primary industries

Kevlar® Comfort provides superior protection against a range of hazards that's comfortable to wear all day long.

Automotive

Maintenance

Construction

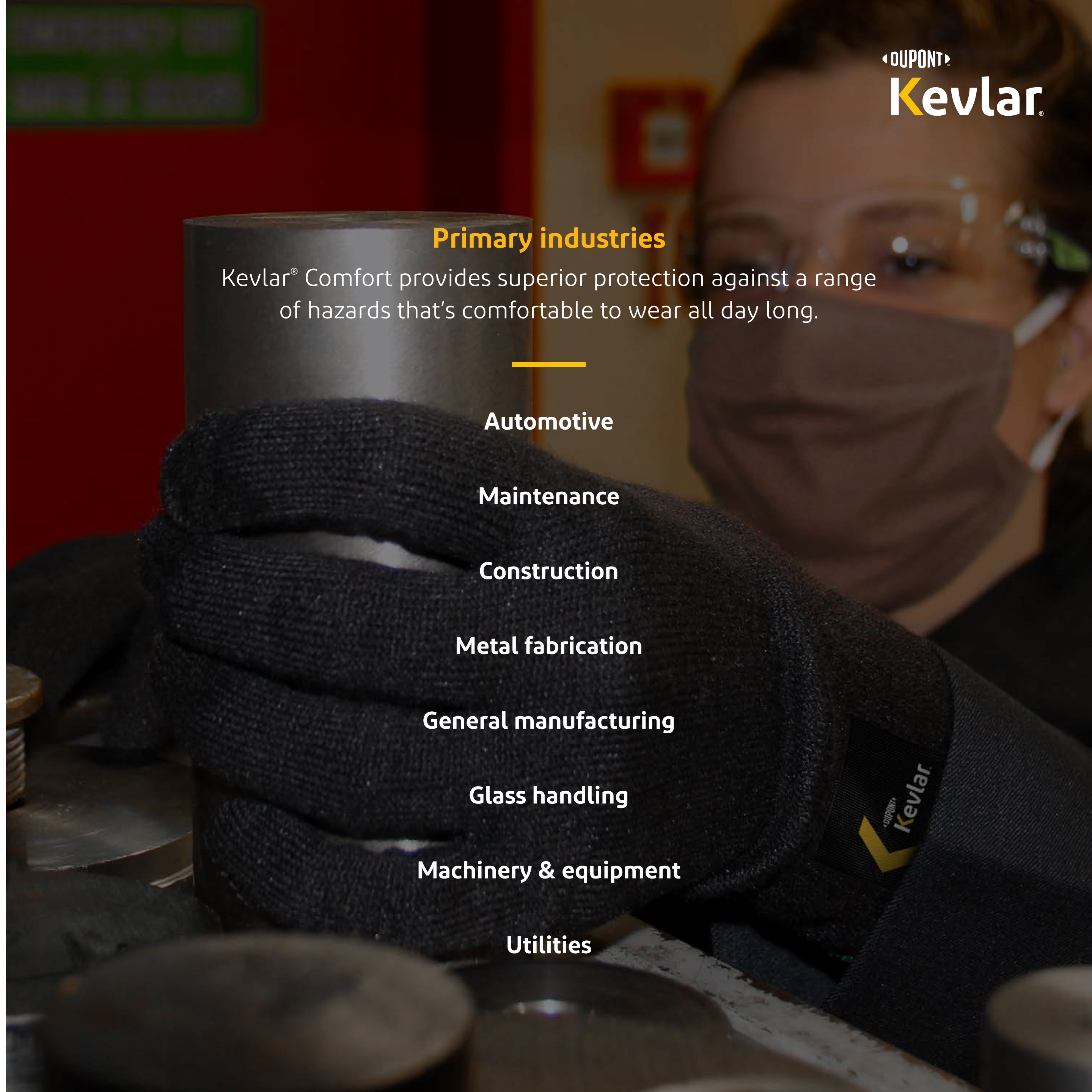
Metal fabrication

General manufacturing

Glass handling

Machinery & equipment

Utilities



Kevlar®

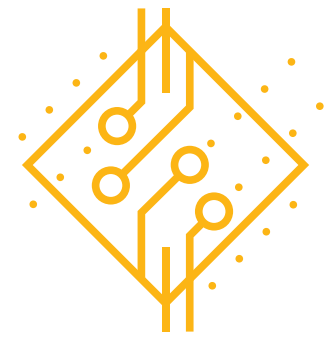
An unmatched balance of protection, durability and dexterity

Kevlar® engineered yarns help deliver the proven cut and heat protection and durability to withstand the toughest conditions that workers rely on.



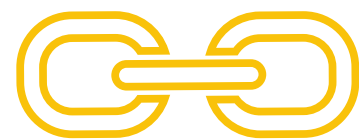
Balanced performance

Medium- to heavy-duty gloves balance durability, dexterity and cut and heat performance



Technology

Patented DuPont technology provides a differentiated solution



Durability

Designed to withstand tough conditions to provide protection wear after wear



Primary industries

Kevlar® enables enhanced levels of protection and additional cushioning for the more demanding tasks across a range of industries.

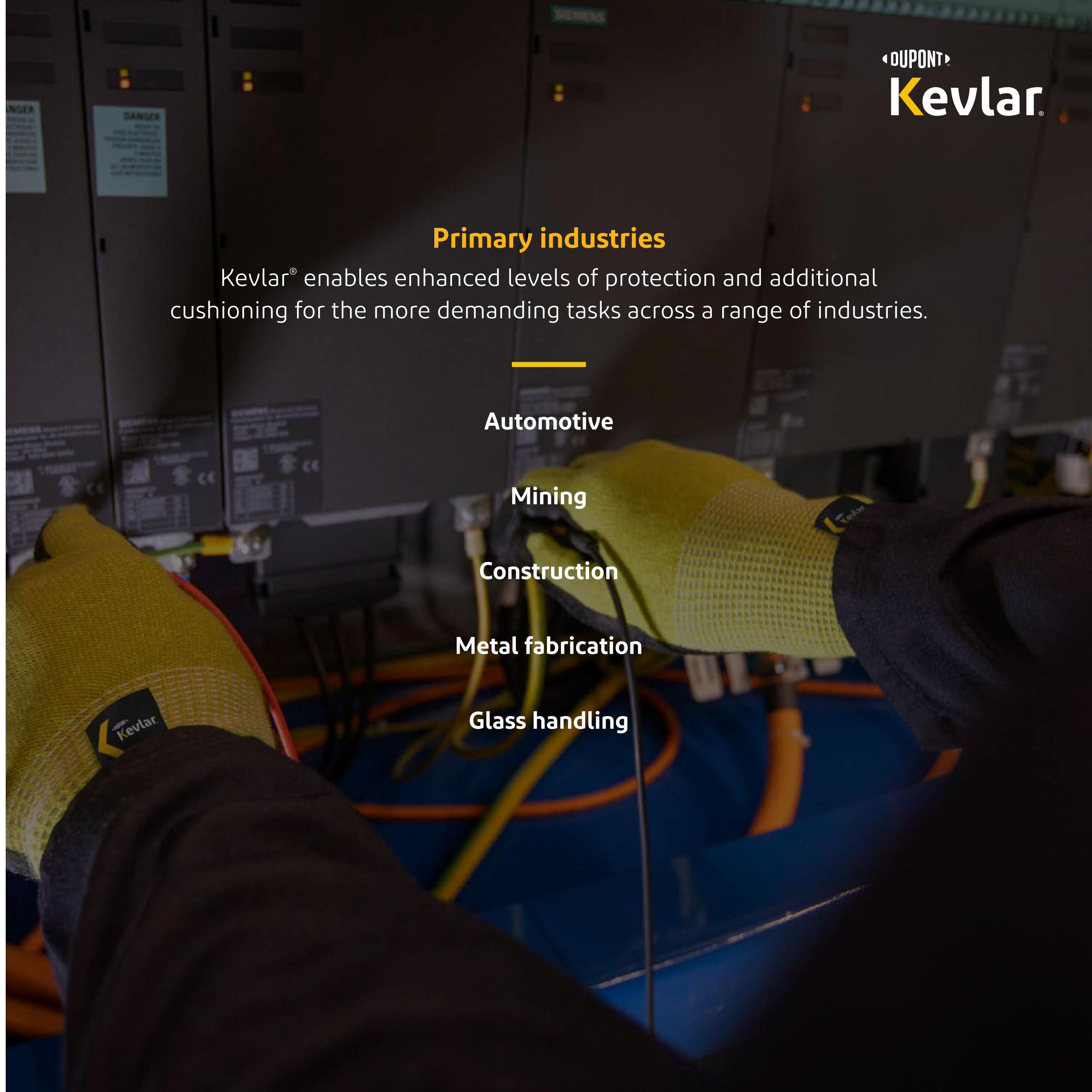
Automotive

Mining

Construction

Metal fabrication

Glass handling



Kevlar® Essential

Optimum value for reliable protection and comfort

Kevlar® Essential engineered yarns are designed to provide both value and light- to medium-duty protection against both cut and heat hazards.



Value

Reliable cut and heat protection at an affordable price



Comfort

Superior soft touch and improved sweat management



Color options

New DuPont technology provides a range of colors to choose from



Primary industries

Kevlar® Essential provides the everyday protection for workers who require light- to medium-duty protection.

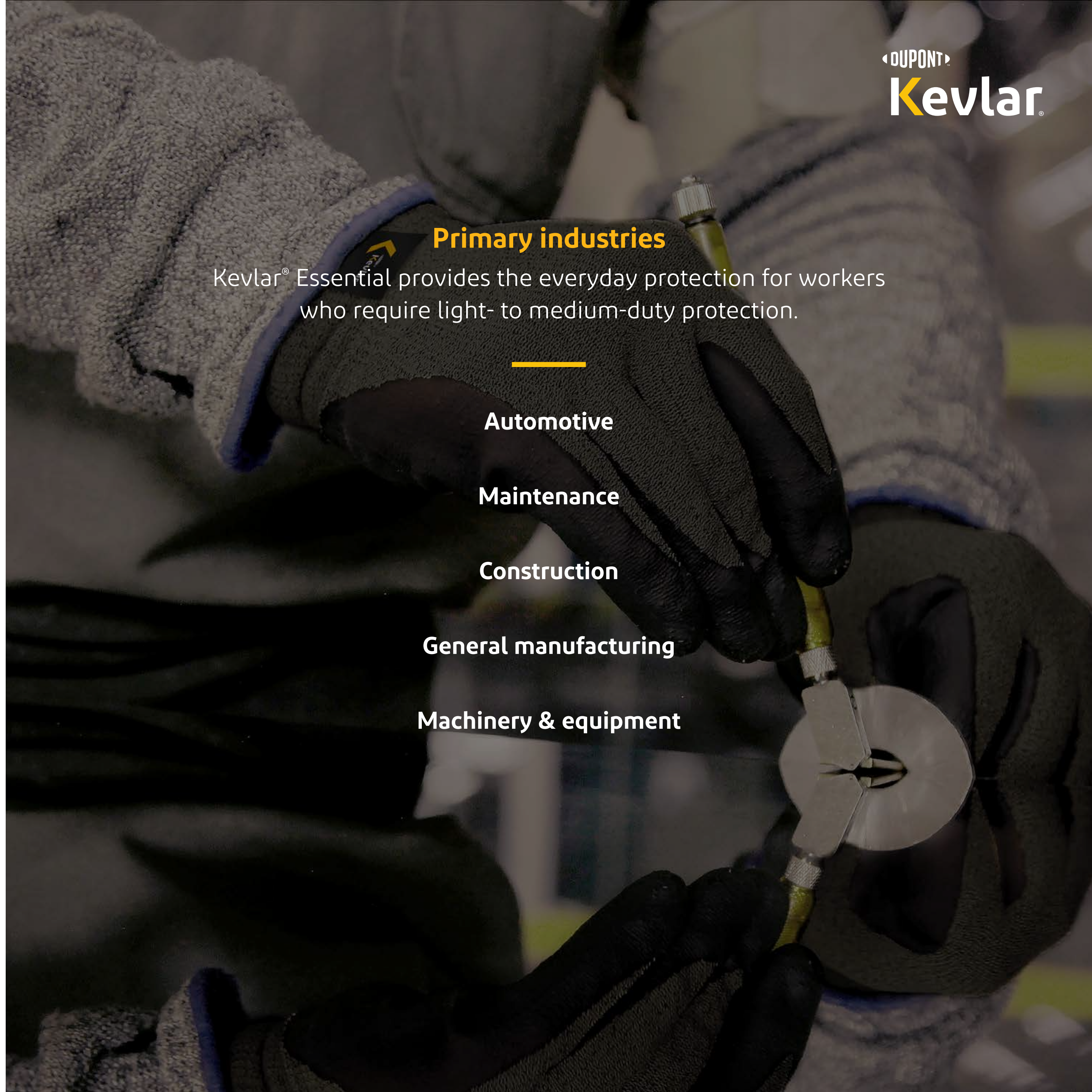
Automotive

Maintenance

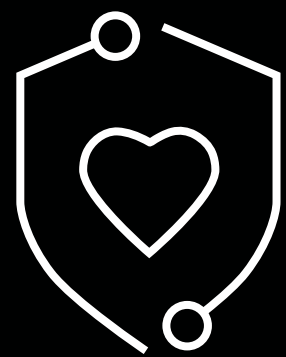
Construction

General manufacturing

Machinery & equipment



The real cost of workplace injuries*



Only Kevlar® is designed for the multiple hazards workers face on the job—to increase protection, help reduce workplace injuries and provide the peace of mind workers and safety managers deserve.

\$53,000

Average puncture cost

1,000,000+

Annual hand injuries in the U.S. alone

\$45,000

Cost of average laceration

30% of hand injuries are caused by wearing the wrong glove**



Workplace injuries can have lasting physical and financial effects. Kevlar® engineered yarns help provide the flexibility to deliver the right protection and performance for any job—without the need for additional design enhancements.



Multi-hazard protection

Industry-leading cut performance with built-in heat and flame resistance



Comfort

Lightweight, flexible and highly breathable—for the comfort users want



Dexterity

Designed to allow wearers to perform their tasks easily and safely



Partnership

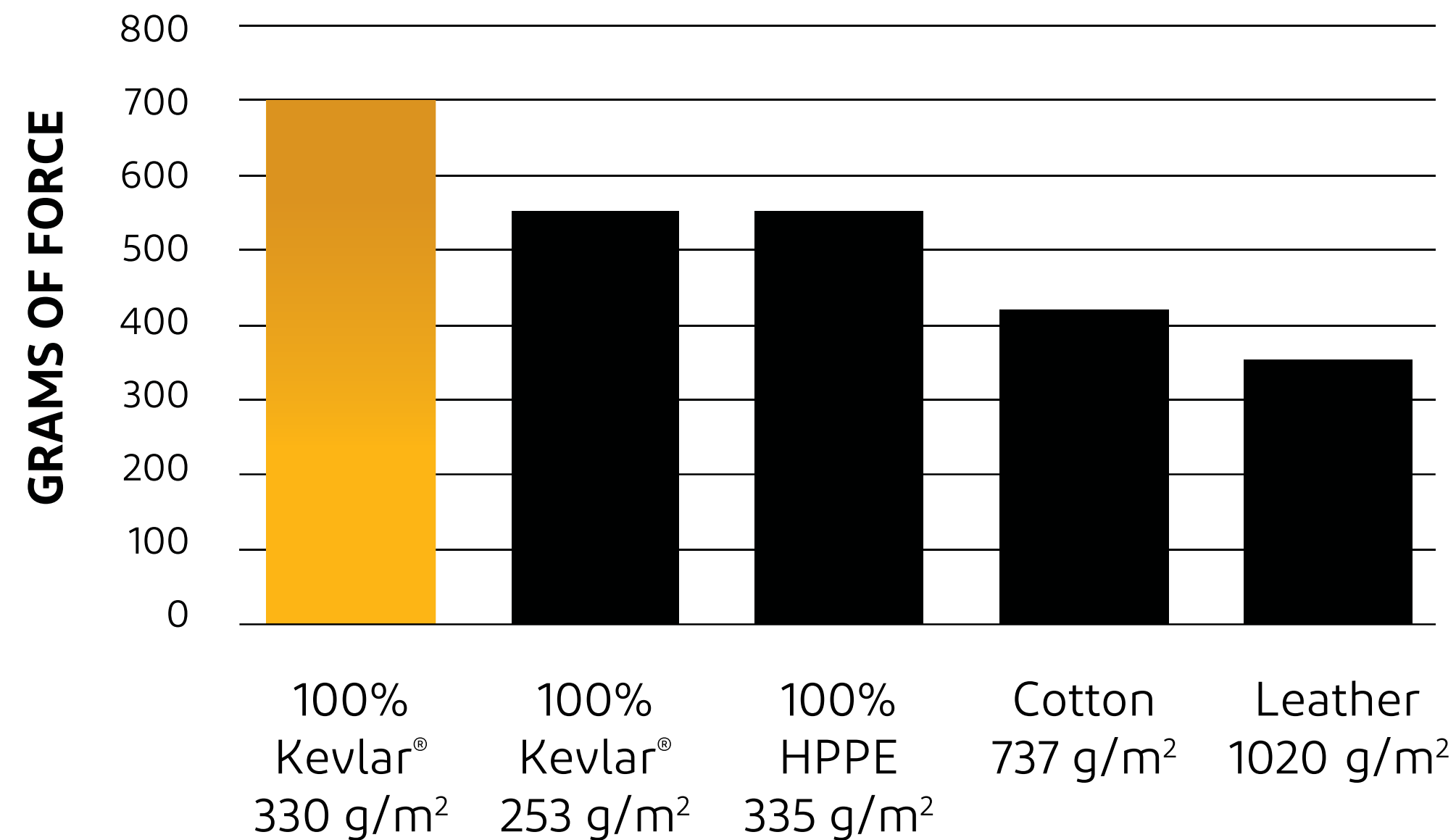
We work with a global network of authorized manufacturers and Kevlar® licensees

*Occupational Safety and Health Administration "Estimated Costs of Occupational Injuries and Illnesses and Estimated Impact on a Company's Profitability Worksheet"

**NSC.org, 2013 Safety Statistics for the Well Service Industry

Protection that's a cut above

Kevlar® provides at least 30% higher cut resistance and can be 25% lighter than competitors' engineered yarns. When it comes to the competition, there's no comparison with the performance of Kevlar® engineered yarns.



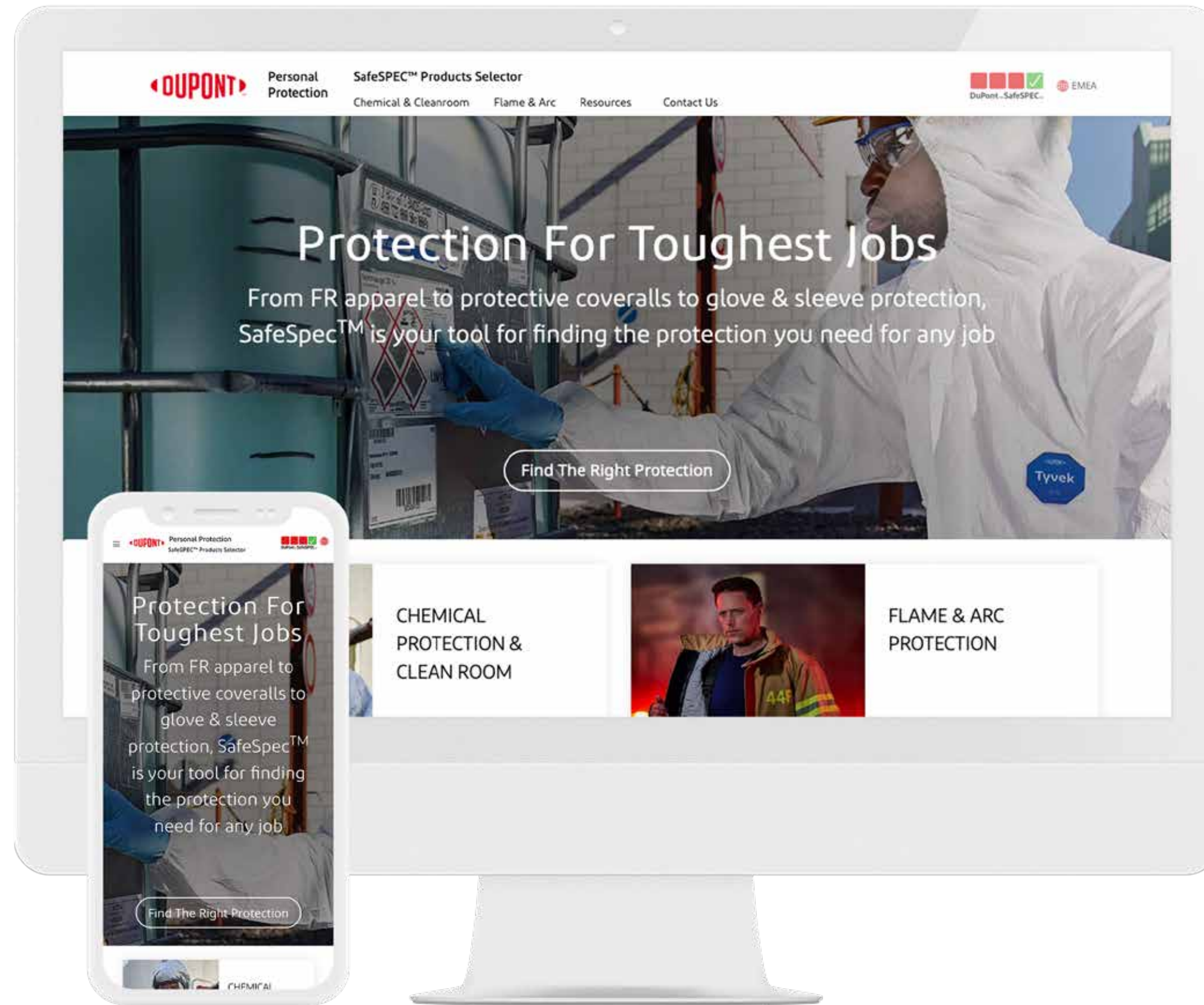
Test method: ASTM 2992

We're more than a supplier. We're a partner.

From technical expertise to testing capabilities, our global network of resources provides the support you need to solve your toughest challenges.



○ Technical centers ● Thermo-Man® Units ● Arc-Man® Units



dpp.dupont.com
safespec.dupont.com

 **DuPont Personal Protection**
 **@DuPontPPE**

Product safety information is available upon request.

This information is based upon technical data that DuPont believes to be reliable. It is subject to revision as additional knowledge and experience become available. It is the user's responsibility to determine the level of toxicity and the proper personal protective equipment needed. This information is intended for use by persons having the technical expertise to undertake evaluation under their own specific end-use conditions, at their own discretion and risk. Anyone intending to use this information should first check that the garment selected is suitable for the intended use. The end-user should discontinue use of garment if fabric becomes torn, worn or punctured, to avoid potential chemical exposure. Since conditions of use are beyond our control, DUPONT MAKES NO WARRANTIES, EXPRESSED OR IMPLIED, INCLUDING BUT NOT LIMITED TO WARRANTIES OF MERCHANTABILITY OR FITNESS FOR A PARTICULAR PURPOSE AND ASSUME NO LIABILITY IN CONNECTION WITH ANY USE OF THIS INFORMATION. This information is not intended as a license to operate under or a recommendation to infringe any patent or technical information of DuPont or other persons covering any material or its use.

© 2022 DuPont. All rights reserved. DuPont™, the DuPont Oval Logo, and all trademarks and service marks denoted with ™, SM or ® are owned by affiliates of DuPont de Nemours, Inc. unless otherwise noted.